

comART UNDERCAP

PLC/BPL capacitive coupling solution
comART UNDERCAP has been
specially designed for indoor MV
installations, up to 36 kV.

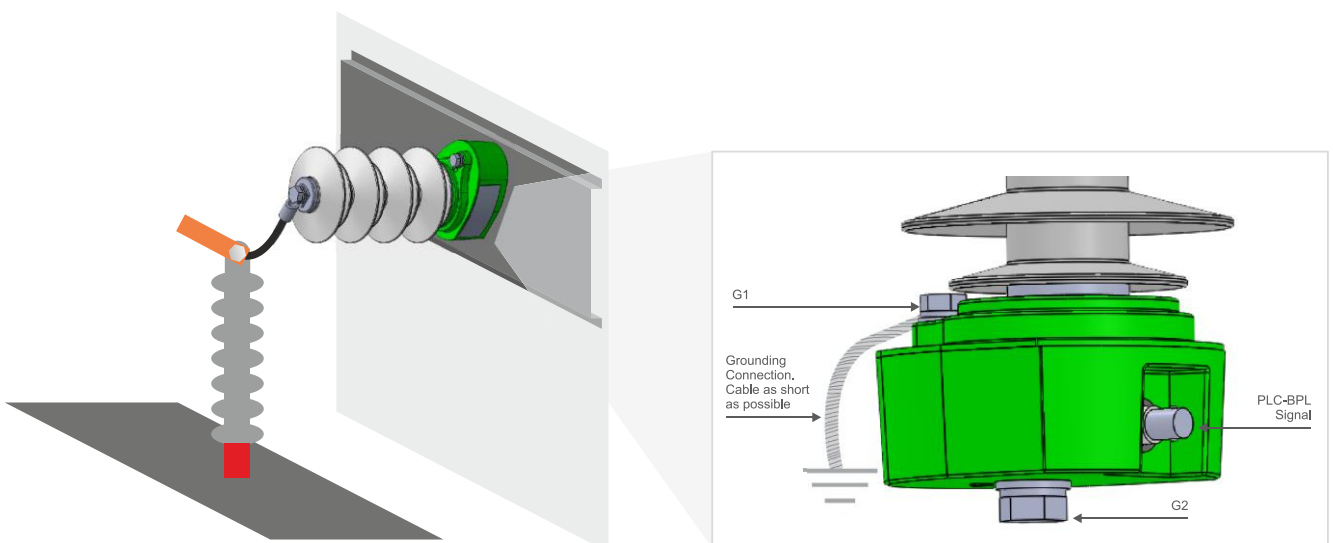


APPLICATIONS

- > Arteche PLC / BPL coupling devices are essential components to deploy telecommunications networks over medium voltage power lines.
- > A highly reliable, versatile, scalable technology that supports the most advanced smart grid functions, such as Advanced Metering Infrastructure (AMI), operation management, Fault Location, Isolation and Service Restoration (FLISR), Demand Response (DR) and other advanced distribution automation applications.

MAIN FEATURES

- > Capacitive coupling solution for underground MV power lines. Up to 36 kV.
- > Installation in Air insulation cubicles (AIS).
- > Reduced size and lightweight
- > A solution that assures the quality, reliability and safety of the use of MV network for communication purposes.
- > A full range of tests applied to guarantee the maximum safety.
- > Arteche offers a full range of couplers for different applications (indoor, outdoor, cabinets)
- > FCC rules compliant



TECHNICAL SPECIFICATIONS

Electrical Characteristics

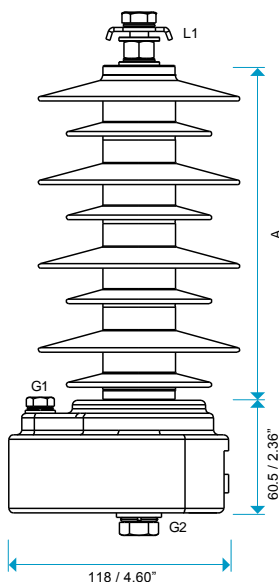
Insulation Voltage		25 kV	36 kV
Dielectric strength		At 50 kV	At 70 kV
Routine test	Partial discharges	<50pC at 28.8 kV	<50pC at 43.2 kV
	Galvanic insulation	5 kVrms (communication port)	
Type tests	AC Voltage test	at 50 kV	at 70 kV
	Lightning impulse voltage test (BIL)	at 125 kV	at 170 kV
	Capacitor discharge	at 125 kV	at 170 kV
Ground Disconnecter		According to 7.6.3, IEC 60099-4 1991	
Operating conditions (according to EN60870-2-2 Class C2)		Temperature from -25°C to +75°C Relative humidity from 15 to 100%	
Storage conditions (according to EN60870-2-2 Class C3)		Temperature from -40°C to +75°C Relative humidity from 10 to 100%	
Reference standards		IEC 60358-190 / IEC 61334-3-22-2001-01 / ANSI C93.1-1999	
Arcing distance		7.08" - 180 mm	360 mm. / 14.17"
Leakage distance		22" - 565 mm	1130 mm. / 44.5"

Communication Characteristics

Frequency range		2 - 40 MHz	
Insertion losses		≈ 3dB	
Impedance	Line side	20 Ω	
	Equipment side	50 Ω	
PLC-BPL connector		BNC Connector	

Mechanical Characteristics

Materials	Insulation	Silicone	
	Circuitry	Polyamide 6	
RoHS compliant 2002/95/EC			



Dimensions UNDERCAP [L1][G1][25/36]

	25 kV	36 kV
A Arcing distance	180 mm. / 7.08"	360 mm. / 14.17"
Weight	1.6 kg / 3.5 lb	3 kg / 4.3 lb
Diameter	Max. : 110 mm / 4.3"	